



# Des Sources Wind Project Project Overview

150 MW

Planned Capacity\*

27 000

Homes Powered\*

6 à 10

Operations Jobs\*

930 000\$

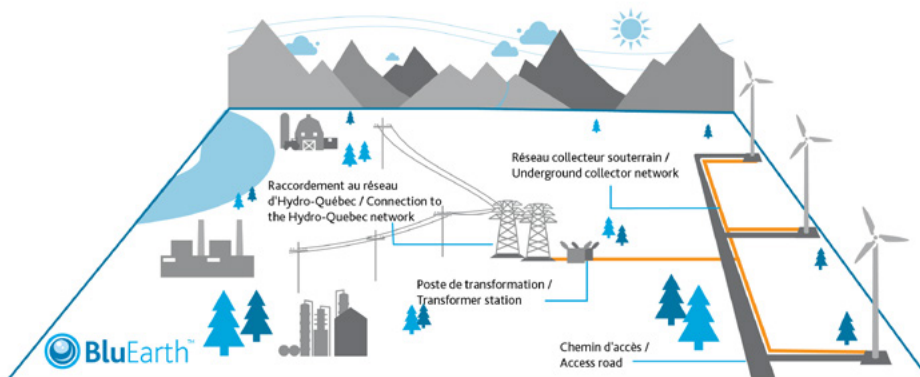
Yearly income for participating municipalities\*

\*estimated

Des Sources Wind Project is developed by BluEarth Renewables, a Canadian renewable energy producer. The project is located in the Des Sources RCM and in the ancestral territory of the W8banaki Nation, the Ndakina. With a planned capacity of 150 MW, it anticipates a 50% community ownership, reflecting BluEarth's commitment to engage closely with local communities.

Project development began in 2023 and the project is currently in the pre-feasibility and consultation phase. We are currently evaluating the study area and revising and optimizing the project design presented in 2023.

The project includes the installation and construction of turbines, a substation, an underground collector system and access roads. Project construction will also include road improvements.



*For all our projects, including the Des Sources Wind Project, we have a long-term vision and our team works in close consultation with government agencies and key stakeholders to site, build and operates our facilities responsibly. To achieve this, we rely on the consultation and collaboration of all stakeholders in the development of our projects and in our decision-making.*

**Expected start of construction:**

- 2027 or 2028

**Expected start of operation:**

- December 2028, at the earliest

**Expected operating period:**

- 25 to 30 years

**Number of Turbines:**

- 26 to 35 turbines of approximately 6 MW

**Turbines size:**

- Tower height: 100 to 120 metres
- With blade in vertical position: 160 to 200 metres

**Municipalities in the study area:**

- Saint-Georges-de-Windsor
- Wotton
- Danville

**Potential community partners:**

- MRC des Sources
- Nation W8banaki

**Visit our website:**

[dessourceswind.ca](http://dessourceswind.ca)

**Email:** [projects@blueearth.ca](mailto:projects@blueearth.ca)

**Phone:** 819 866-0056

**About BluEarth**

BluEarth Renewables Inc. is a Canadian independent power producer that develops, builds, owns, operates and acquires wind, hydroelectric, solar and energy storage facilities across North America. Our technologically and geographically diversified project portfolio totals more than 1 GW (gross) in operation, under construction and pre-construction, and more than 7 GW under development.

**Our Key Consultants**

Since the beginning of the development phase of Des Sources Wind Project, we have been supported by Montreal-based firm Plan A Capital. Plan A provides support to numerous clients in the renewable energy sector and has co-developed the Dune-du-Nord Wind Facility as well as initiated the Grosse-Île Wind Project, both located in Îles-de-la-Madeleine.



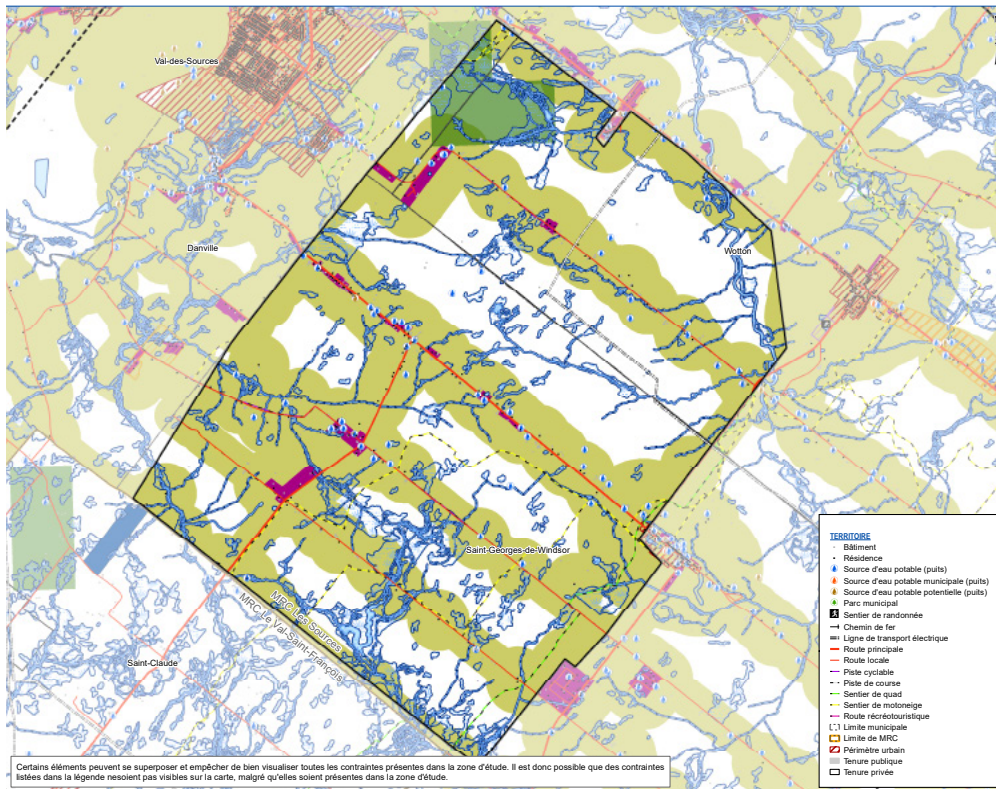
# Study Area

The study area for Des Sources Wind Project meets three winning conditions for the development of a wind project:

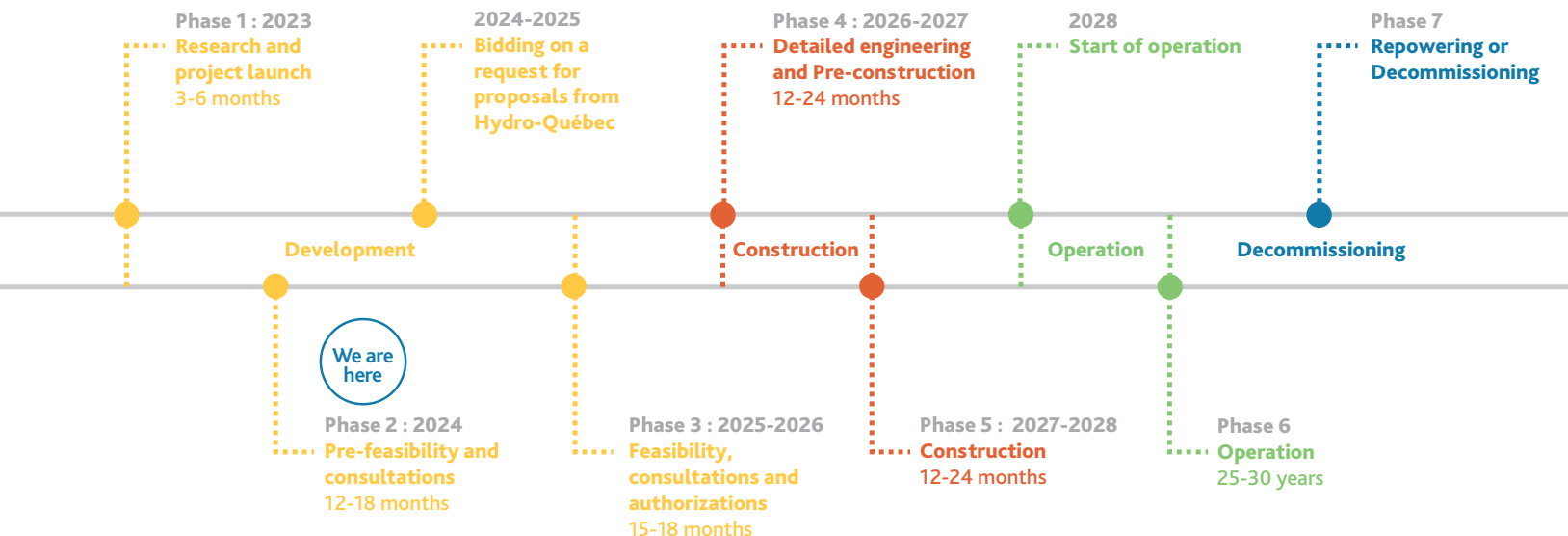
1. Good wind resources
2. Possibility of connection to the Hydro-Québec grid
3. Community interest in developing the project

The study area was adapted to the various constraints and implementation standards, particularly regarding proximity to residences and the preservation of protected areas.

It will evolve following pre-feasibility studies and public consultations. Other considerations and constraints may then be added and taken into account in the development of the project.



# Preliminary Schedule



\*This preliminary timeline may change depending on a future Hydro-Québec request for proposals.